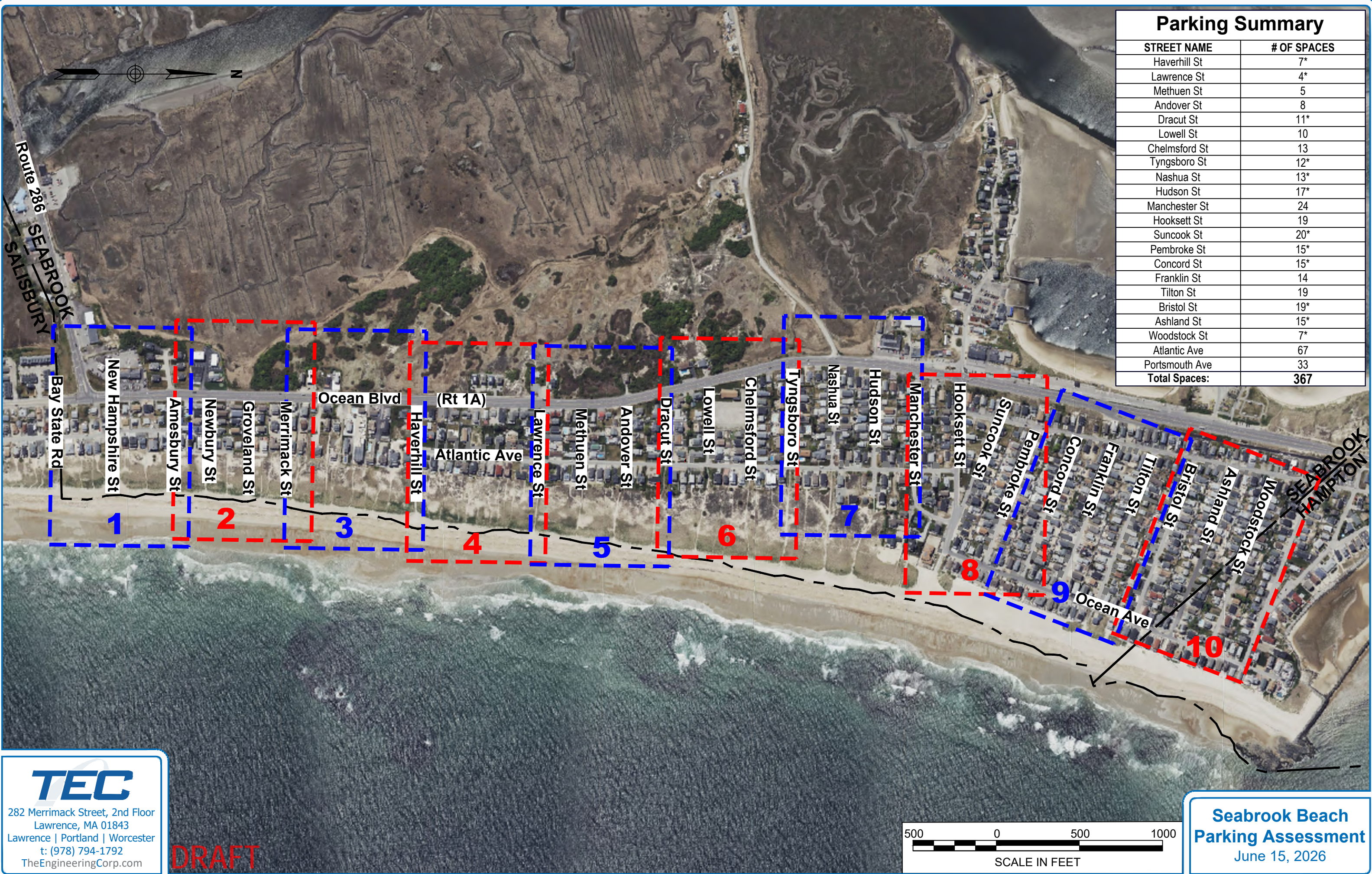


### Parking Summary

STREET NAME	# OF SPACES
Haverhill St	7*
Lawrence St	4*
Methuen St	5
Andover St	8
Dracut St	11*
Lowell St	10
Chelmsford St	13
Tyngsboro St	12*
Nashua St	13*
Hudson St	17*
Manchester St	24
Hooksett St	19
Suncook St	20*
Pembroke St	15*
Concord St	15*
Franklin St	14
Tilton St	19
Bristol St	19*
Ashland St	15*
Woodstock St	7*
Atlantic Ave	67
Portsmouth Ave	33
<b>Total Spaces:</b>	<b>367</b>

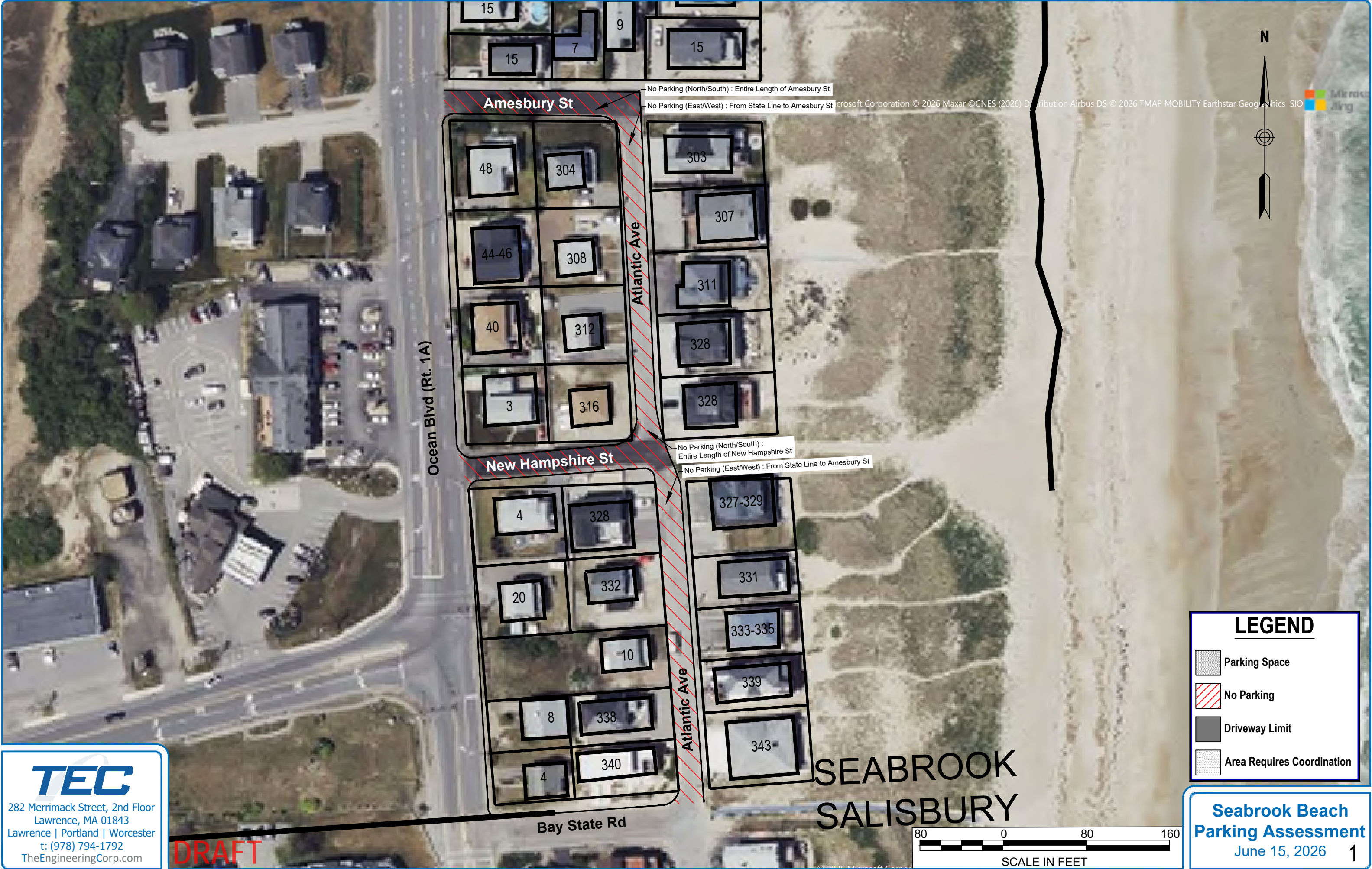


**TEC**  
 282 Merrimack Street, 2nd Floor  
 Lawrence, MA 01843  
 Lawrence | Portland | Worcester  
 t: (978) 794-1792  
 TheEngineeringCorp.com

**DRAFT**



**Seabrook Beach  
 Parking Assessment**  
 June 15, 2026



**Amesbury St**

No Parking (North/South) : Entire Length of Amesbury St

No Parking (East/West) : From State Line to Amesbury St

Ocean Blvd (Rt. 1A)

Atlantic Ave

**New Hampshire St**

No Parking (North/South) : Entire Length of New Hampshire St

No Parking (East/West) : From State Line to Amesbury St

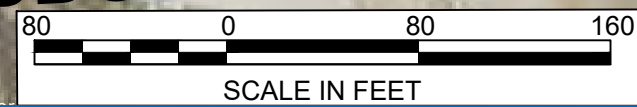
Atlantic Ave

**Bay State Rd**

**SEABROOK  
SALISBURY**

**LEGEND**

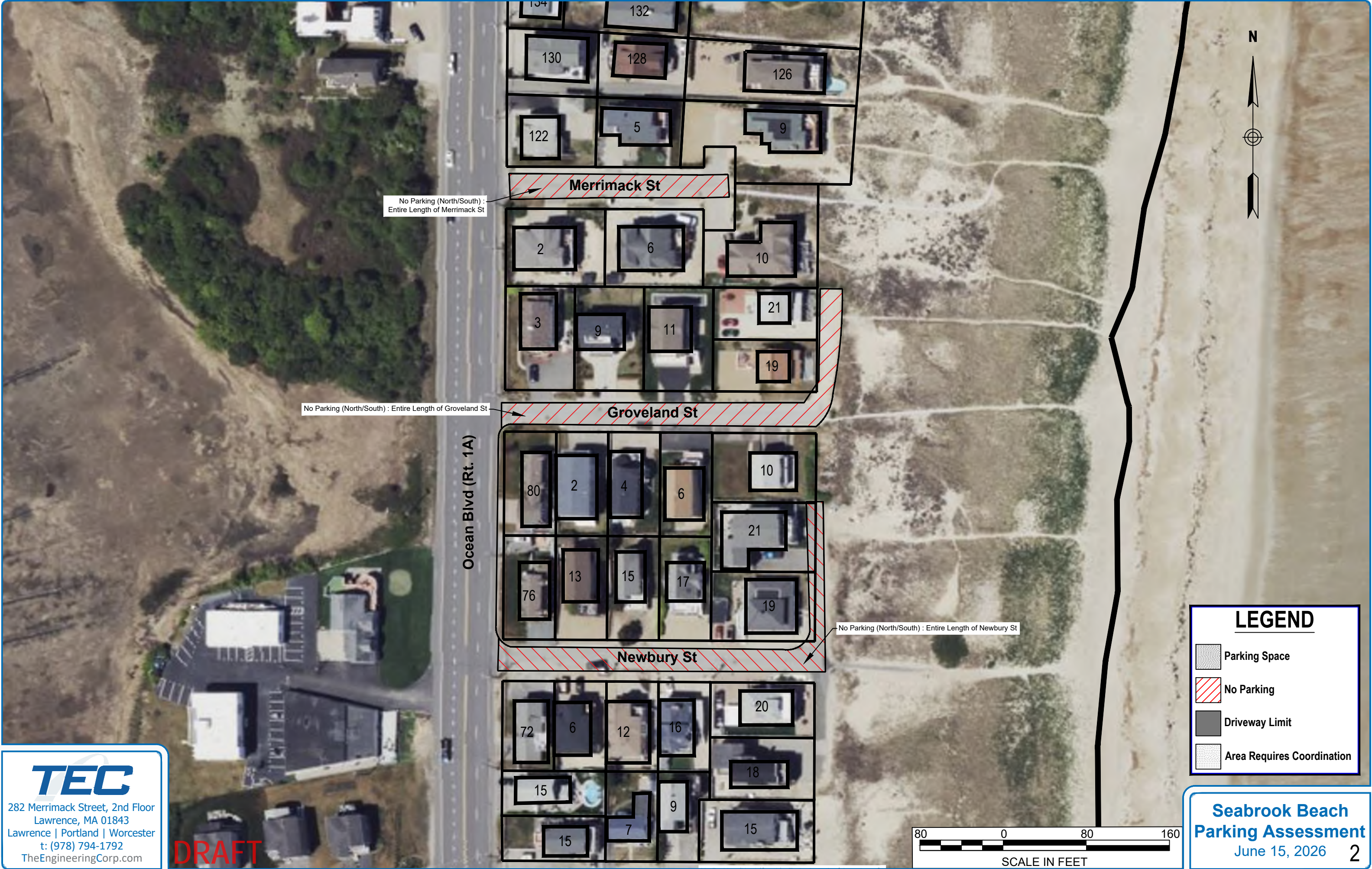
-  Parking Space
-  No Parking
-  Driveway Limit
-  Area Requires Coordination



**TEC**  
 282 Merrimack Street, 2nd Floor  
 Lawrence, MA 01843  
 Lawrence | Portland | Worcester  
 t: (978) 794-1792  
 TheEngineeringCorp.com





**DRAFT**

**Seabrook Beach  
Parking Assessment**  
 June 15, 2026 1



**DRAFT**

**LEGEND**

-  Parking Space
-  No Parking
-  Driveway Limit
-  Area Requires Coordination

**DRAFT**

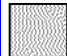


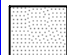
Ocean Blvd (Rt. 1A)

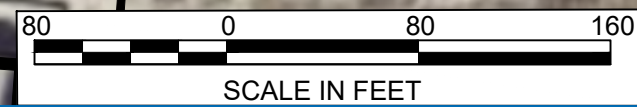


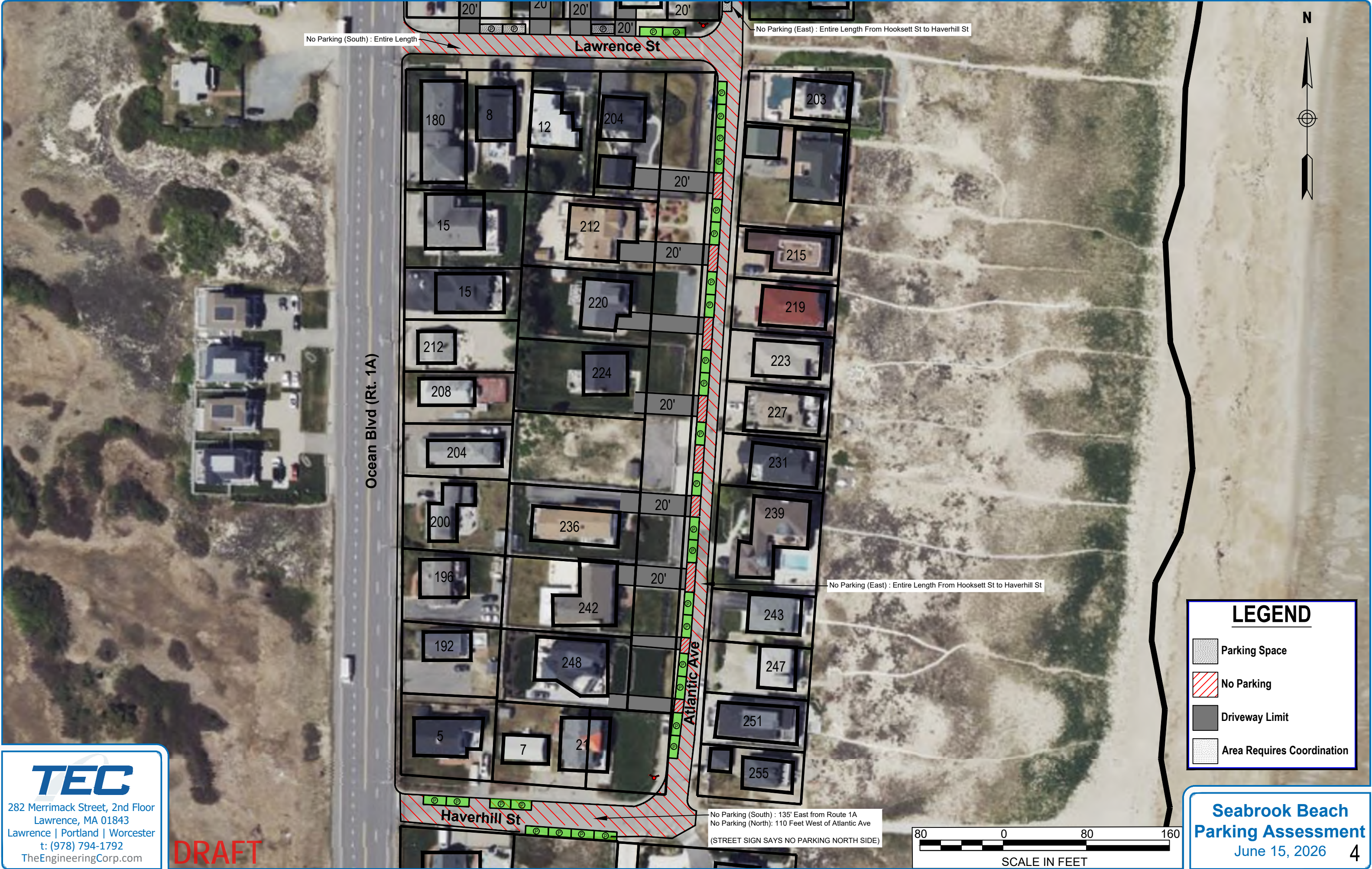
No Parking (South) : 135' East from Route 1A  
 No Parking (North): 110 Feet West of Atlantic Ave  
 (STREET SIGN SAYS NO PARKING NORTH SIDE)



**LEGEND**

-  Parking Space
-  No Parking
-  Driveway Limit
-  Area Requires Coordination



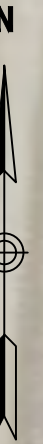


No Parking (South) : Entire Length



No Parking (East) : Entire Length From Hooksett St to Haverhill St

No Parking (East) : Entire Length From Hooksett St to Haverhill St

No Parking (South) : 135' East from Route 1A  
 No Parking (North) : 110 Feet West of Atlantic Ave  
 (STREET SIGN SAYS NO PARKING NORTH SIDE)



**LEGEND**

-  Parking Space
-  No Parking
-  Driveway Limit
-  Area Requires Coordination




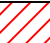


**TEC**  
 282 Merrimack Street, 2nd Floor  
 Lawrence, MA 01843  
 Lawrence | Portland | Worcester  
 t: (978) 794-1792  
 TheEngineeringCorp.com

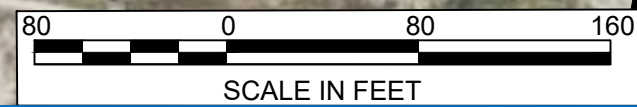
**DRAFT**

**Seabrook Beach  
 Parking Assessment**  
 June 15, 2026 4



**LEGEND**

-  Parking Space
-  No Parking
-  Driveway Limit
-  Area Requires Coordination



**TEC**  
 282 Merrimack Street, 2nd Floor  
 Lawrence, MA 01843  
 Lawrence | Portland | Worcester  
 t: (978) 794-1792  
 TheEngineeringCorp.com

**DRAFT**

**Seabrook Beach  
 Parking Assessment**  
 June 15, 2026 5



**LEGEND**

-  Parking Space
-  No Parking
-  Driveway Limit
-  Area Requires Coordination



**TEC**  
 282 Merrimack Street, 2nd Floor  
 Lawrence, MA 01843  
 Lawrence | Portland | Worcester  
 t: (978) 794-1792  
 TheEngineeringCorp.com

**DRAFT**

**Seabrook Beach  
 Parking Assessment**  
 June 15, 2026 6

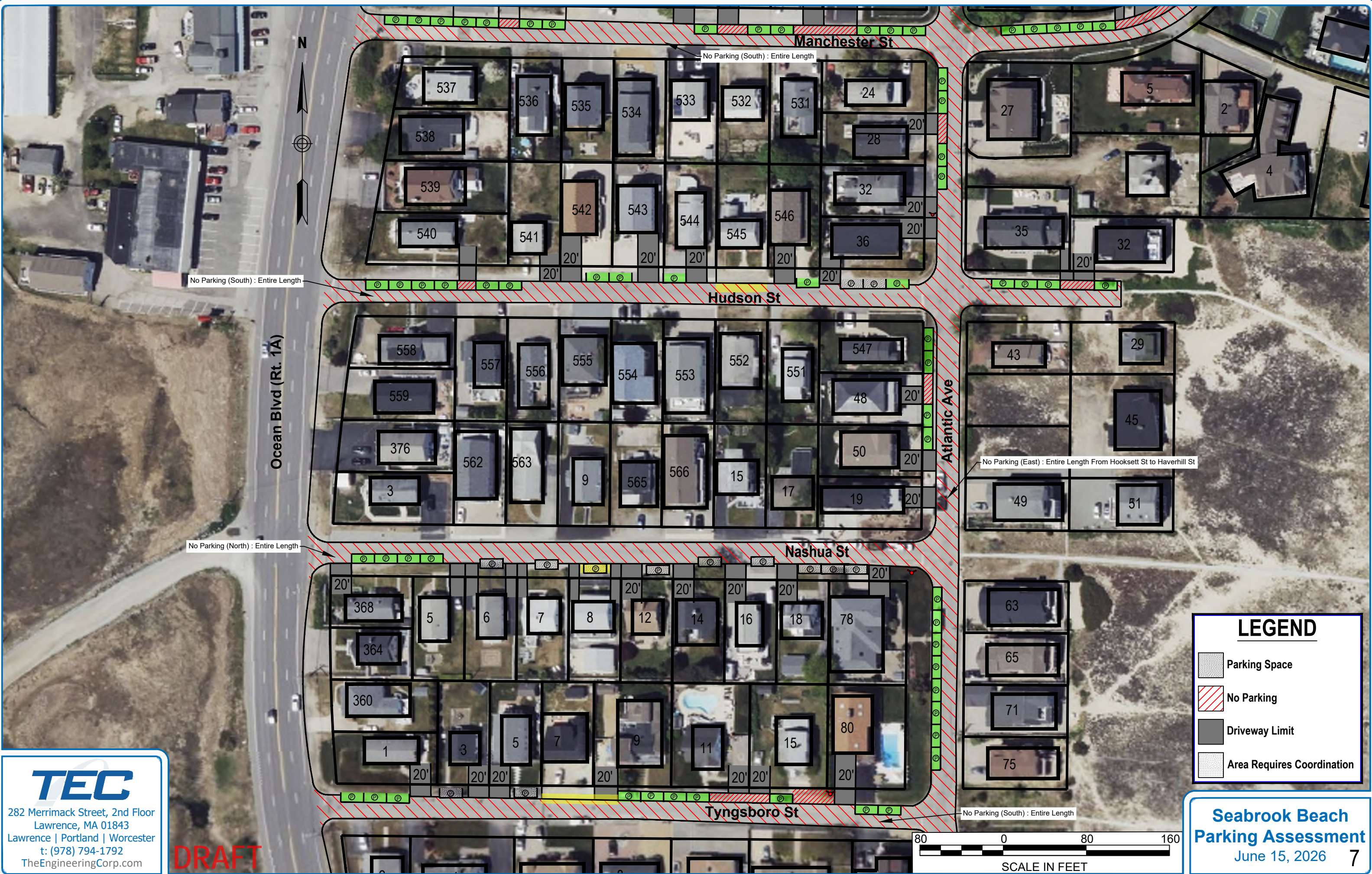
No Parking (North) : Entire Length

No Parking (South) : Entire Length

No Parking (South) : Entire Length

No Parking (North) : 253' east of Route 1A  
 No Parking (South) : 100' West of Atlantic Avenue

No Parking (East) : Entire Length From Hooksett St to Haverhill St



**TEC**  
 282 Merrimack Street, 2nd Floor  
 Lawrence, MA 01843  
 Lawrence | Portland | Worcester  
 t: (978) 794-1792  
 TheEngineeringCorp.com

**DRAFT**

**Seabrook Beach  
 Parking Assessment**  
 June 15, 2026 7



Ocean Blvd (Rt. 1A)

Portsmouth Ave

Pembroke St

Suncook St

Ocean Dr

Hooksett St

Suncook St

Atlantic Ave

Manchester St

Manchester St

**DRAFT**

No Parking (North) : 251' east of Portsmouth Ave  
No Parking (South) : 145' West of Atlantic Avenue

No Parking (North) : Entire Length

No Parking (South) : Entire Length





No Parking (South) : From Portsmouth Ave to Hooksett St

No Parking (East/West) : Entire Length

No Parking (East) : Entire Length From Hooksett St to Haverhill St

No Parking (South) : Entire Length

**LEGEND**

-  Parking Space
-  No Parking
-  Driveway Limit
-  Area Requires Coordination







**TEC**  
 282 Merrimack Street, 2nd Floor  
 Lawrence, MA 01843  
 Lawrence | Portland | Worcester  
 t: (978) 794-1792  
 TheEngineeringCorp.com

**Seabrook Beach  
 Parking Assessment**  
 June 15, 2026 8

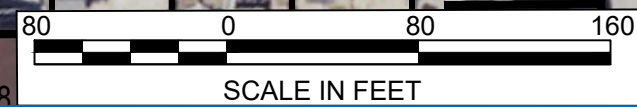


**LEGEND**

-  Parking Space
-  No Parking
-  Driveway Limit
-  Area Requires Coordination



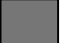

**TEC**  
 282 Merrimack Street, 2nd Floor  
 Lawrence, MA 01843  
 Lawrence | Portland | Worcester  
 t: (978) 794-1792  
 TheEngineeringCorp.com

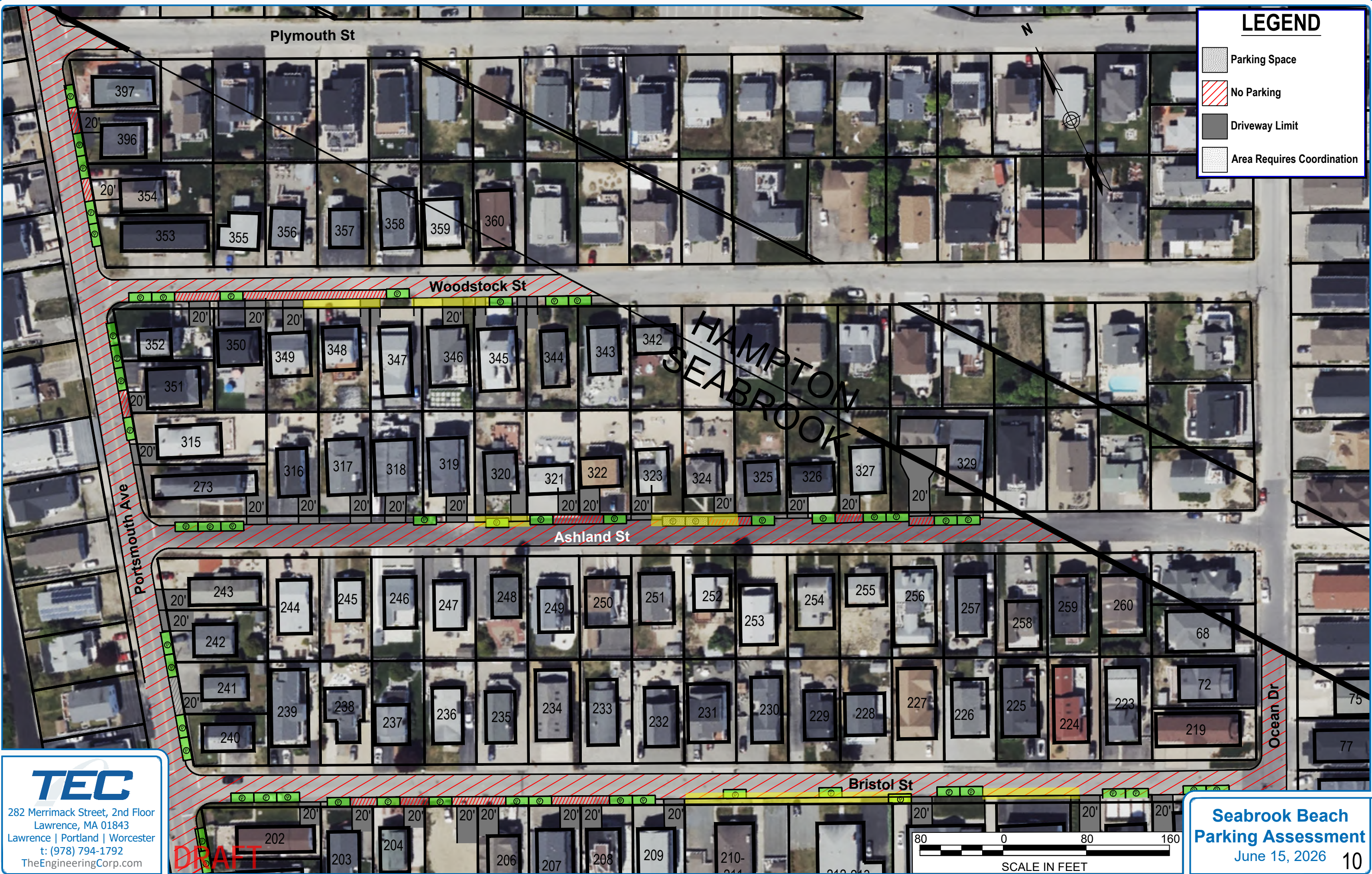
**DRAFT**



**Seabrook Beach  
 Parking Assessment**  
 June 15, 2026 9

# LEGEND

-  Parking Space
-  No Parking
-  Driveway Limit
-  Area Requires Coordination



282 Merrimack Street, 2nd Floor  
Lawrence, MA 01843  
Lawrence | Portland | Worcester  
t: (978) 794-1792  
TheEngineeringCorp.com

**DRAFT**

**Seabrook Beach  
Parking Assessment**  
June 15, 2026 10