

Smithtown Village

District - *a new village concept*

A village is more than the sum of its parts.

Smithtown Village is proposed to foster economic value, business diversity, accessibility, and quality of life consistent with Seabrook's historic village tradition.



Upholding Community Values. The proposed Smithtown Village affirms the community values identified during the 2011 Master Plan update process. Seabrook values:

Choices to work and live locally

Access to civic activity and natural areas

Community participation and involvement

Opportunity for economic prosperity

Based in land development principles that invoke traditional neighborhood patterns providing services, homes and public spaces.

Creating Opportunities. The proposed Smithtown Village enhances economic potential by allowing mixed use development in exchange for building to specified design standards and incorporating open space and connectivity between uses and users.



Building Neighborhoods. The proposed Smithtown Village will improve safety and access by creating a walkable community of residents, businesses and services in a small village setting.

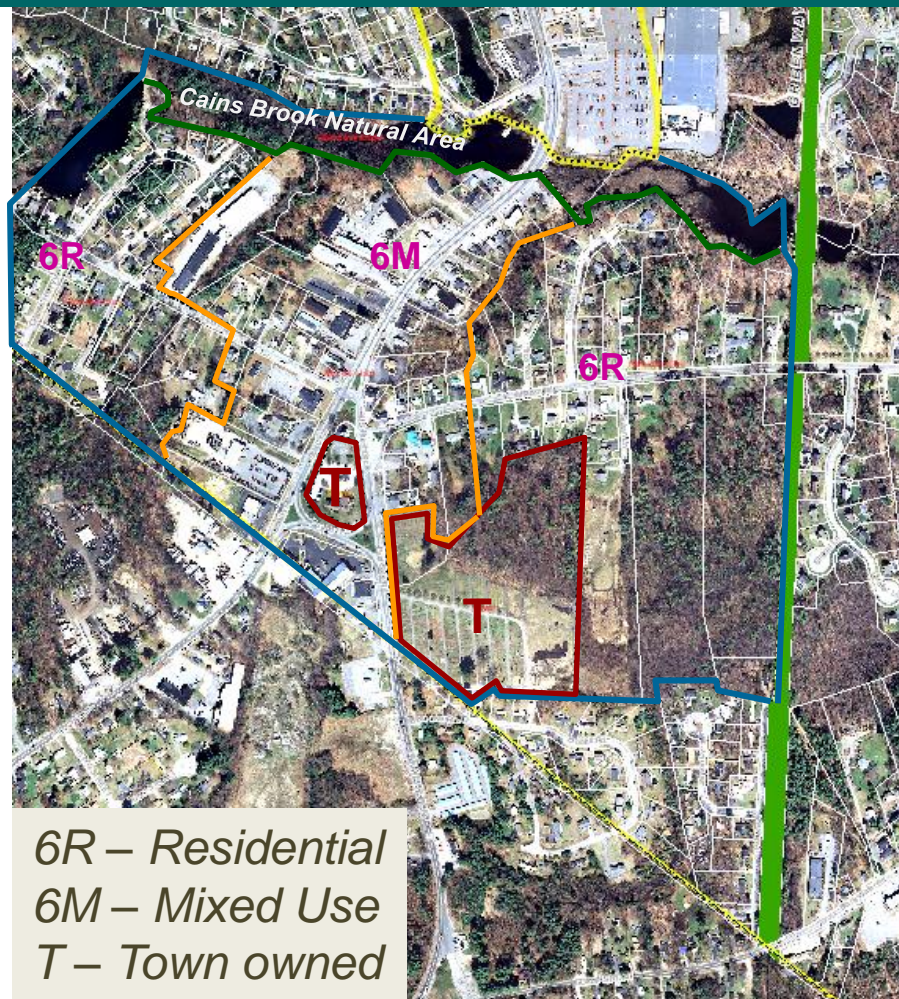
Benefiting the Town. The proposed Smithtown Village District vision is a vibrant community, lively public spaces, safe streets and places to gather.

Ensure the community and local economy are strong into the future.



SMITHTOWN VILLAGE DISTRICT

Connects people, uses, design and community



6R – Residential
6M – Mixed Use
T – Town owned

Implemented by the
Planning Board through:

Land Use , Site Design
Building Form , Zoning and
Site Plan Review Regulations

A vibrant mixed use district with an efficient street network and distinct character of commercial, residential and civic uses, and providing open space, transit, bicycle and pedestrian accommodations.

Important Design Considerations

- Arrangement of buildings, streets and landscaping
- Civic and public spaces, and natural areas
- Diversity and choices in services and housing
- Scale of buildings and function of streets
- Emphasis on quality, less focus on uses
- Access and connections for pedestrians and cyclists

Flexible standards and design guidance are employed to :

Encourage preservation of historical, cultural and natural resources.

Allow for creative designs and solutions.

Promote diversity of uses and services.

Encourage bicycles and pedestrians.

